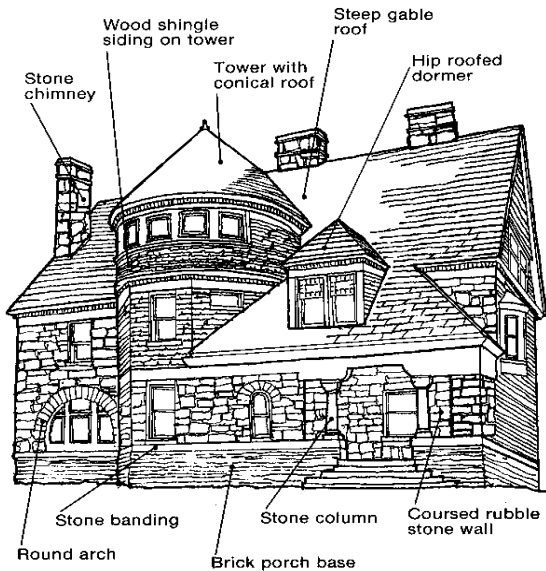


**Commonwealth Girl Scout Council and HRF's
"Discover Historic Richmond" Scavenger Hunt of Monument Avenue**

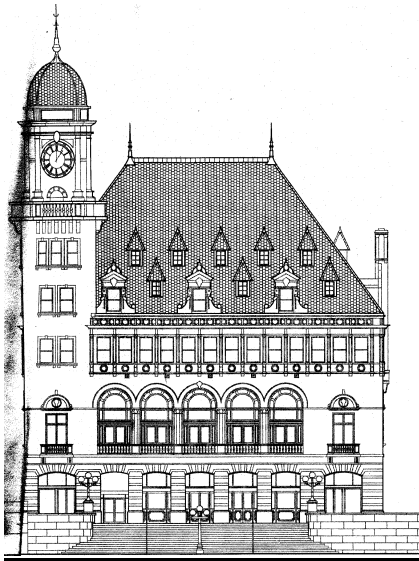
What style is it?

Romanesque Revival 1860-1920



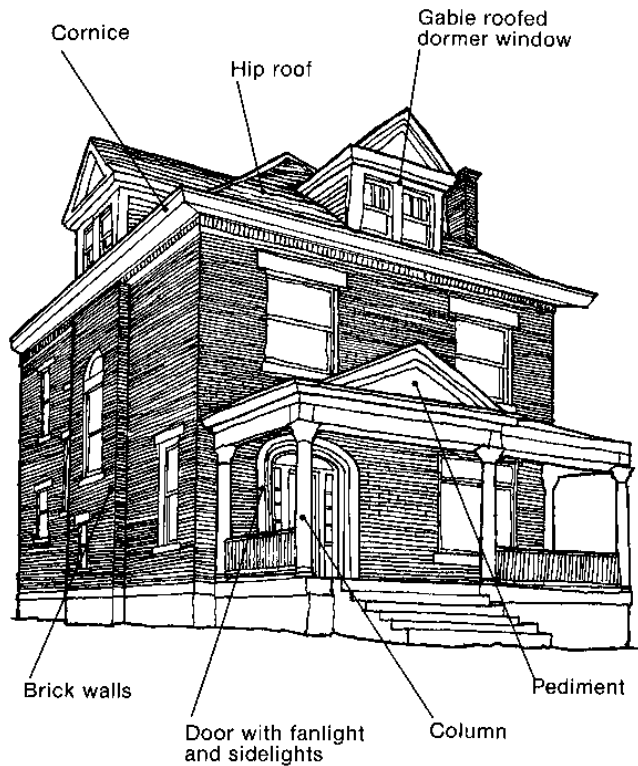
Characteristics: round-headed arches for windows and doors, towers and turrets common. Heavy massive buildings made of brick or stone.

Beaux Arts 1885-1920



Characteristics: identified by a symmetrical facade with decorative garlands or floral patterns. Highly decorated large buildings. Often projecting facades or porches with large columns grouped in pairs. Rich and lavish exterior details and inspiration drawn from the whole gamut of Ancient, Renaissance, and 18th century classical architecture including all European as well as Mediterranean precedents; "wedding cake" inspiration, theatrical and monumental in design.

Colonial Revival 1895-1930



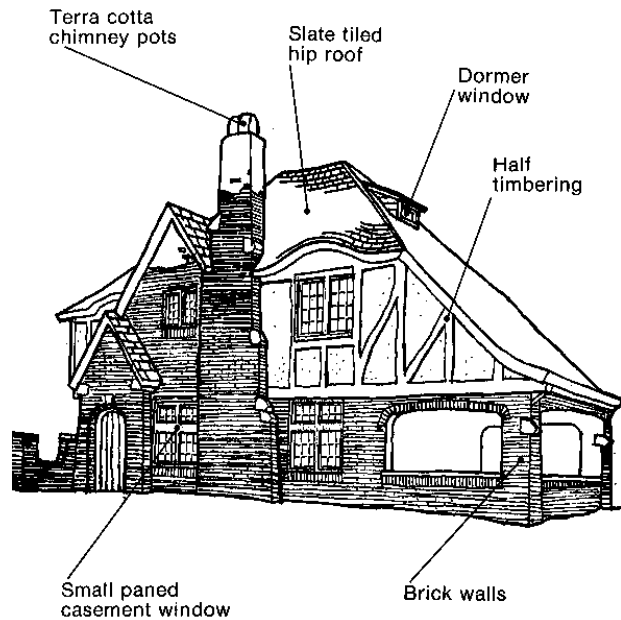
Characteristics: These houses are often a combination of various styles and are usually brick or clapboard. Featured elements include pediments, dormers, and porches, columns on porches and porticos. The front door is surrounded by windows on each side (called a fan light) and an arched window over the door (called a fanlight). The roof contains dormered windows.

Georgian Revival 1870-1920

Characteristics: The Georgian Revival style was popular during the early 20th century and was to resemble those of the elaborate Georgian style of the 18th century. These houses typically have a symmetrical facade and a gable roof. They are usually brick or clapboard. Details include Palladian windows (a group of three windows in which the middle one is wider, taller and usually arched), columned porticos, dormer windows, and doors with sidelights.



Tudor Revival 1870-1920



Characteristics: Tudor Revival was based on 17th-century Elizabethan architecture in England. These buildings feature stone, ornate chimneys, half-timberings, thick walls, dark interiors, and steep rooflines. Tudor Revival houses can be one-and-a-half story cottages or two-and-a-half story mansions.

Half-timbering, is a decorative treatment that appears to expose structural elements. The spaces between the timbers are filled in with stone or brick, and usually stuccoed. Houses may be a combination of brick, rubble stone, and half-timbering.

Exterior: Front façade porches are generally either small or are entirely absent
Windows: Small multiple-paned windows

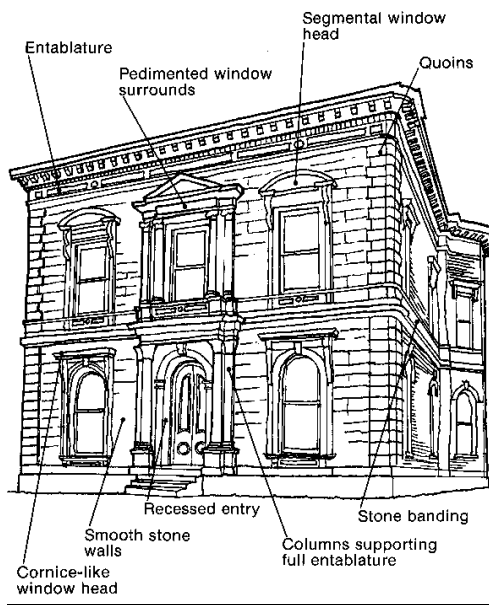
Mediterranean Style circa 1920s



Malo Mansion, Denver

Characteristics: tile roof, generally stucco or brick, often painted white to contrast with the colored roof tiles. Features an extended side or front wall to form an arcaded entrance or porch. Windows are sometimes framed by wrought iron grills or small second story balconies.

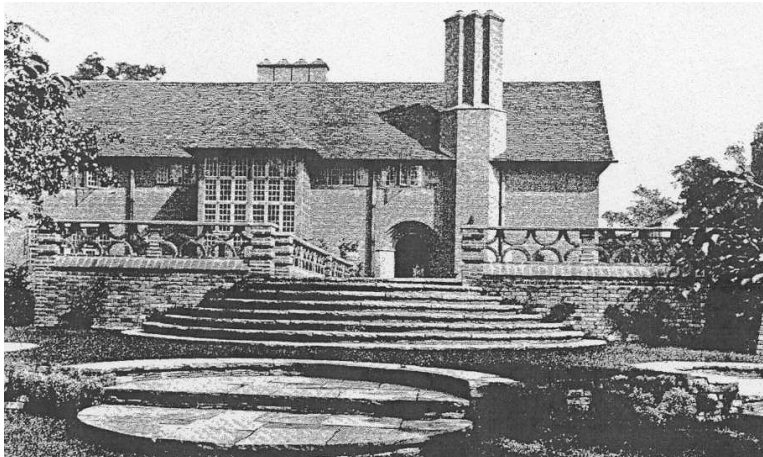
Renaissance Revival 1890-1920



Characteristics: Renaissance Revival buildings have smooth stone fronts. Doors are centrally located and the design emphasizes symmetry. The roofs are often accented with railings. Sometimes stone window trim is featured and varies from floor to floor. Quoins are often used as decoration.

Renaissance Revival houses are elaborate and large. This style is often used for public buildings as well.

Jacobean/ Elizabethan Style 1920-1940



Characteristics: This architectural style is based on old English architecture from the seventeenth century. It features steep roofs, with gables and dormers, round arched entranceways and decorative brickwork. These buildings can also be stone or stucco and have casement windows. Half-timbering, as seen in the Tudor Revival Style, is occasionally used but in smaller places like gables. These buildings are made of one material as opposed to Tudor Revival which uses two or more building materials.